



**BNP PARIBAS  
REAL ESTATE**

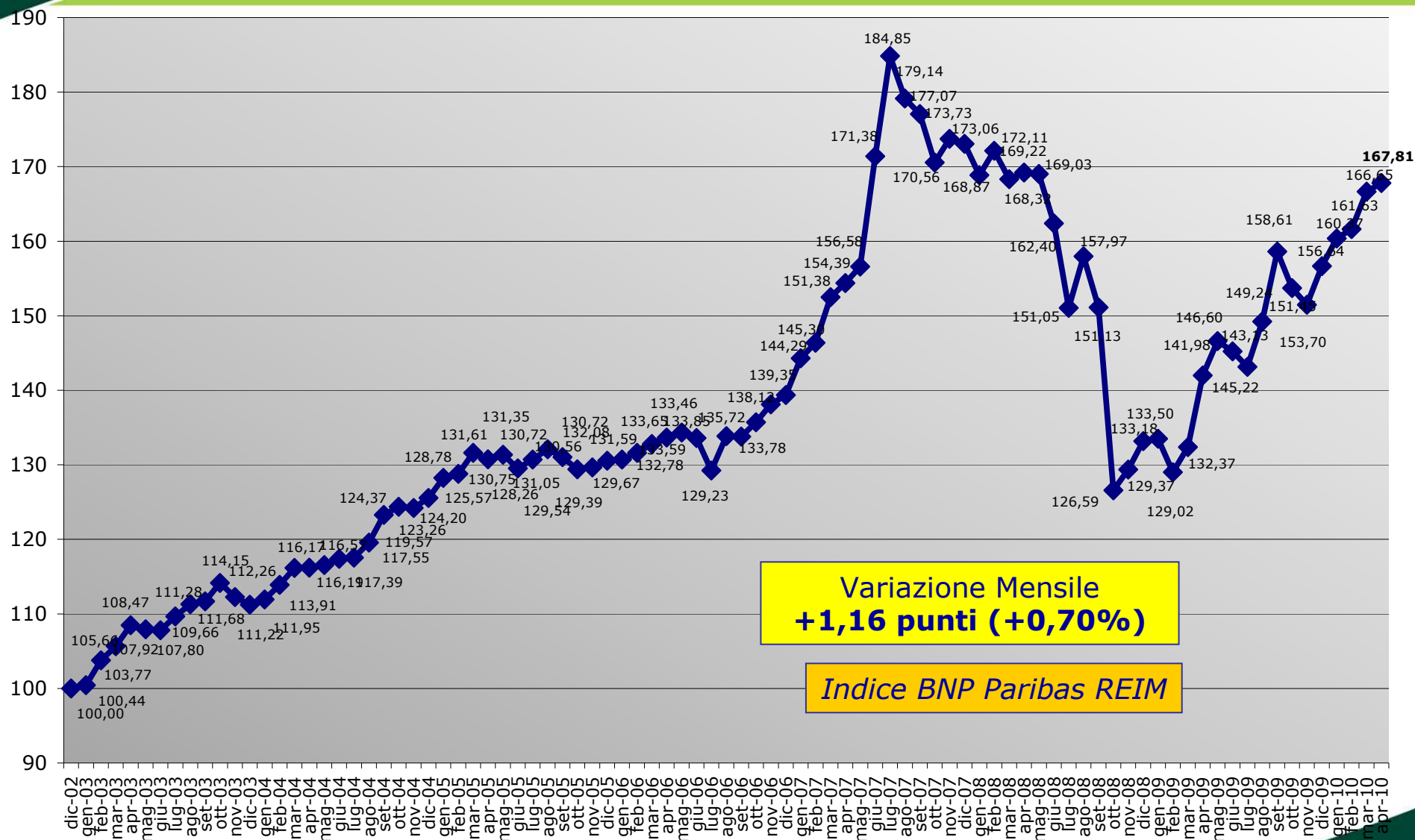
Real Estate for a changing world



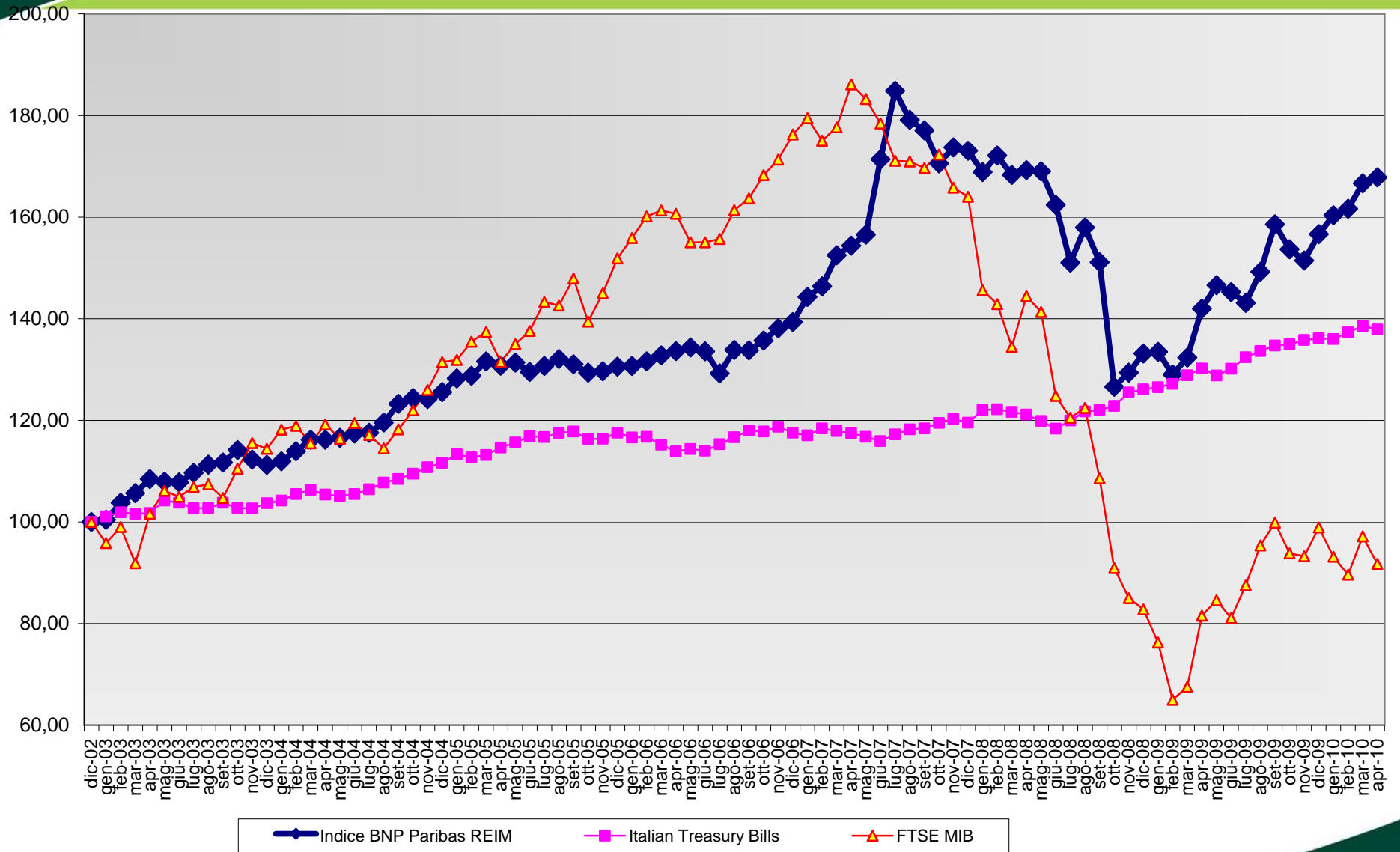
**Indice BNP Paribas REIM – Report Aprile 2010**

11/05/2010

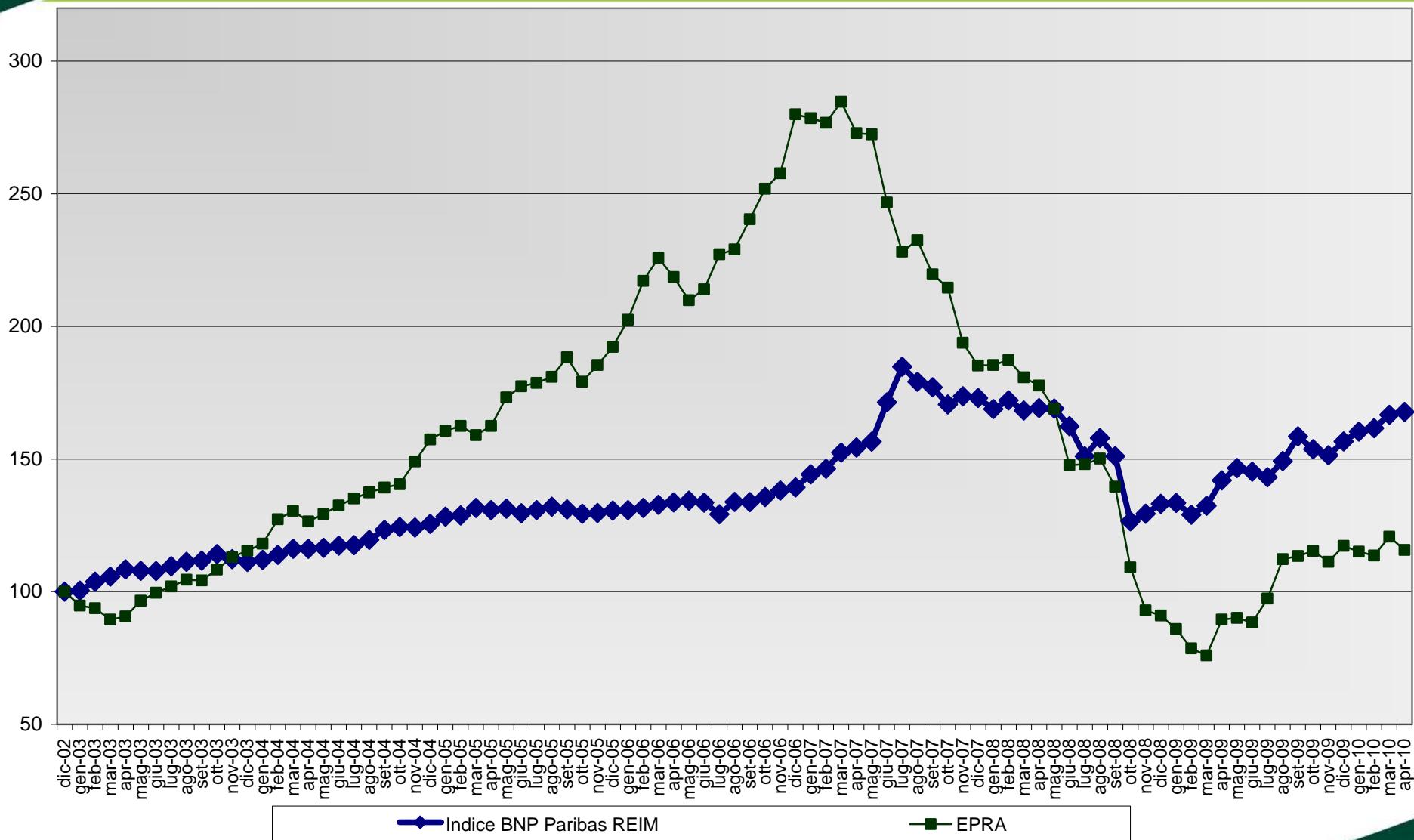
# Indice BNP Paribas REIM - Dicembre 2002 – Aprile 2010



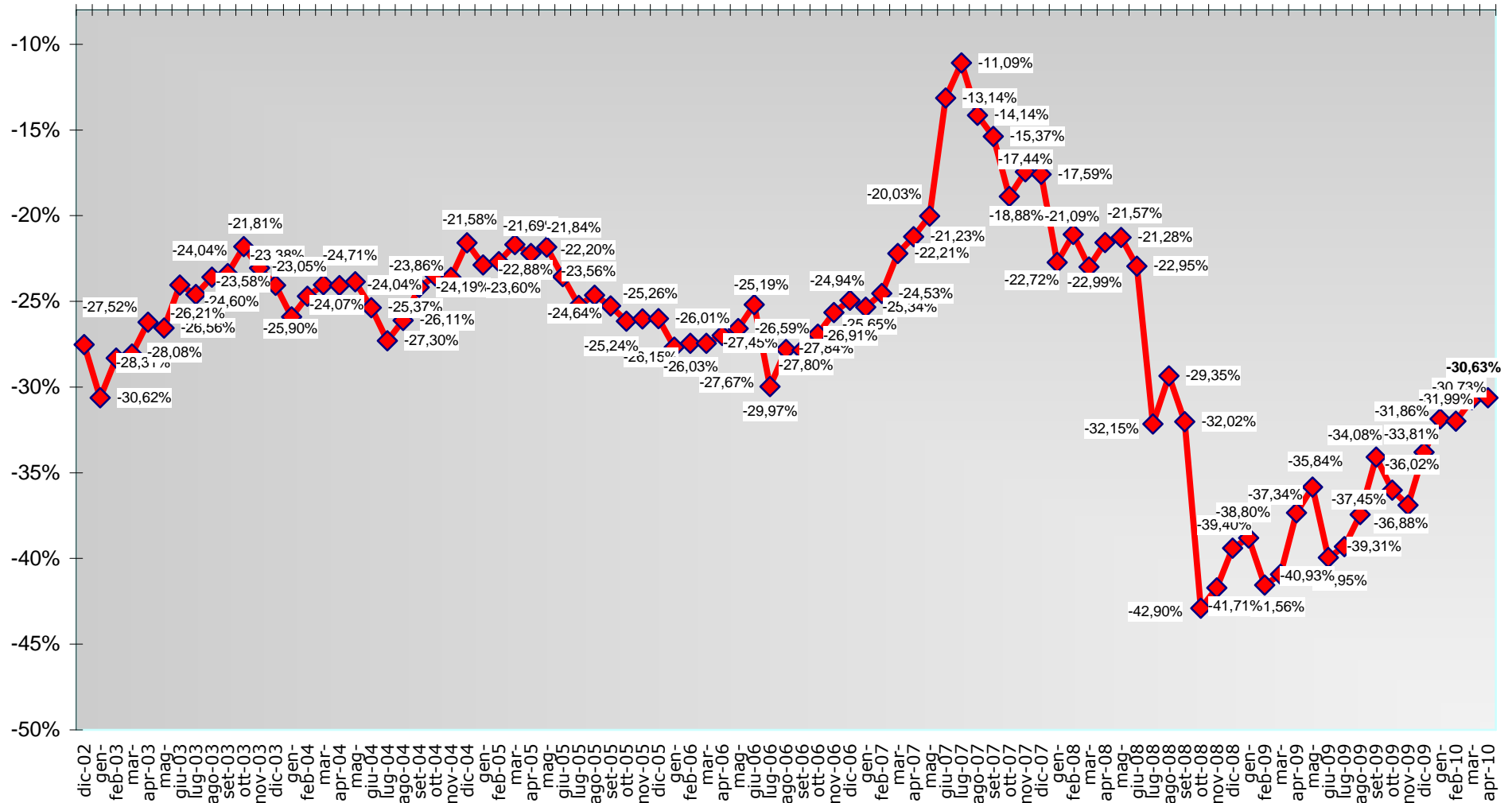
# Indice BNP Paribas REIM ed altre asset class



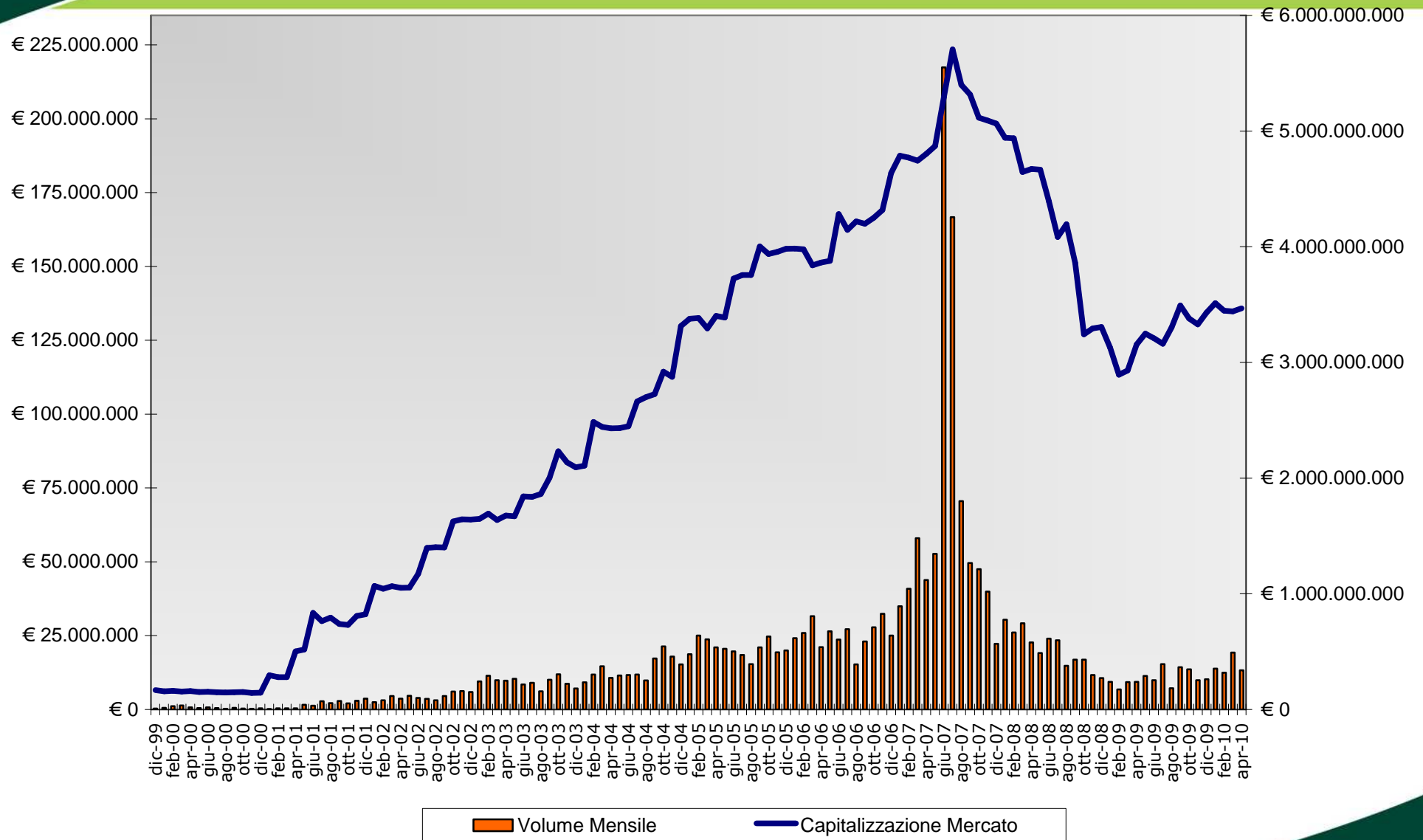
# Indice BNP Paribas REIM e altri indici immobiliari



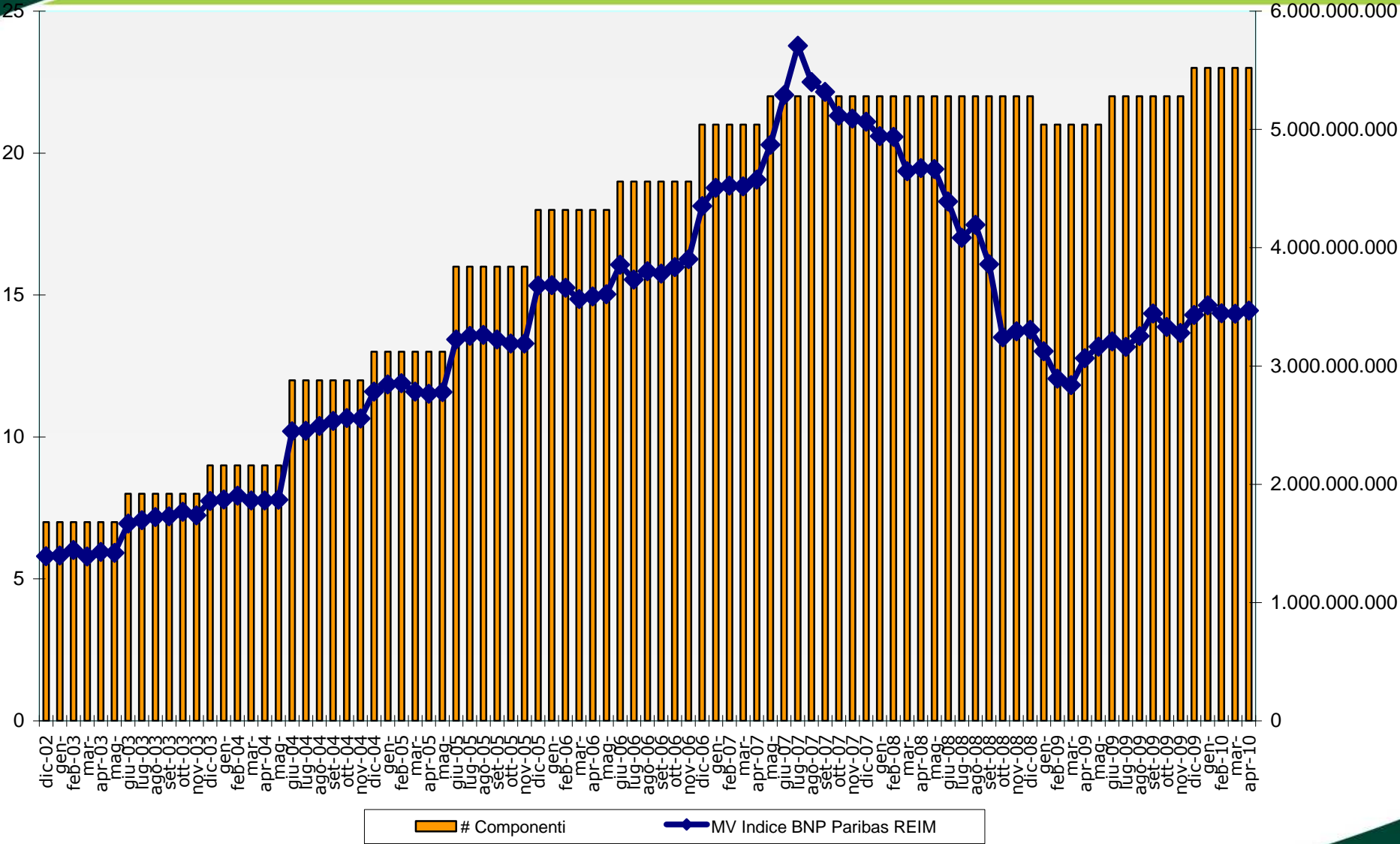
# Indice BNP Paribas REIM DTN (Sconto sul NAV)



## Capitalizzazione e volume di scambio (intero mercato)



# Componenti dell'Indice BNP Paribas REIM



# Componenti dell'Indice BNP Paribas REIM al 31 Dicembre 2009

Capitalizzazione Mercato (al 30/04/2010): €3.468 mln  
23 Fondi quotati

Capitalizzazione Indice BNP Paribas REIM (al 30/04/2010): €3.468 mln  
23 Fondi quotati  
Copertura del Mercato: 100,00%

